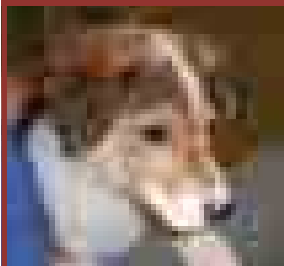


Aaaah! for Arthur



Arthur was a 6 week old cross-collie pup who was brought in with a nasty broken hind leg. He was left with us for Xray – and we never heard from the owner again! They wanted the pup fixed, but did not want to pay for it and so deserted him. After exhausting all enquiries, with fake address and phone

numbers, he was such a nice pup that we decided to go ahead and fix his problems then find a good home for him.

He was in good hands because one of the partners (Stuart Ashworth) has advanced training in orthopaedics and was able to repair the fracture to the femur with an internal pin, while his broken tibia and fibula (lower leg) was repaired using an “external fixator”, where pins hold the bone fragments still after being connected to a separate pin on the outside of the leg. For a few days post-operatively he was kept as a hospital patient at Kings Cross road, where he had a great deal of TLC from our wonderful nurses, then he was fostered with the family of a student who was undertaking a placement with us and finally re-homed with a young family in Angus.

You can see Katie, (with mum, Joanne in the background) when they came to take Arthur to his new home – and he has not looked back since!

We accept referrals from other practices in our area for complicated lamenesses and fracture repairs



IDENTIFY YOUR PET!

Microchip your pet with a *Tracer*® microchip at Parkside. Including VAT, and full life-long registration with Petlog, this will cost you the one-off price of £19.95. Bet you thought it cost a lot more? We can chip most pets and horses. Ask for this when you book an appointment. We can carry this out at the same time as another visit – booster vaccinations, for example



SAVINGS PLAN

Our Savings Plan allows you to put money towards your pet's account, so that it is in credit, to allow for an unexpected bill, or plan for an op, or routine vaccinations. It does not earn interest but there is no charge for this and the money is yours, so you can take it out again out if you are in credit. Some people prefer this to Pet Insurance as this always has an excess to pay every time you have an illness and once you pay a premium, you never see it again. Remember that bills must still be paid in full, even if there are insufficient funds in your pet's account. Most people open a direct debit (forms at each surgery) or you can phone and add money to your account via Switch or a credit card.



Lost Summer

We never had enough of this in 2007! Rosie, baking nicely on one the very few sunny days we had.